



Campus Community Sizes

Lobo Development

PARTNERSHIP+INVESTMENT+COMMUNITY

Campus Community Sizes

In establishing the appropriate size community for UNM residence halls, it was important to evaluate standards at academic peer institutions and summarize the results according to a variety of sizing types:

- Room Size and Spatial Arrangement
- Community Type and Size
- Student Management
- Amenities (building, floor, and room)

Academic peers were chosen from national and regional institutions with samples from southwest, west coast, midwest, and east coast peers. It is the goal of UNM to provide student housing opportunities that are comparable to peer standards, and thus offer similar and competitive opportunities to UNM students.

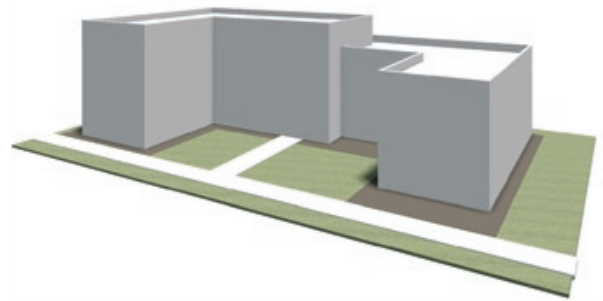
Regional and Academic Peers considered: University of Arizona, University of Colorado, University of Iowa, University of Texas, University of Utah, and University of Washington.

Evaluating the types and sizes of student residential communities revealed common trends for first year residents, and these can be summarized according to a variety of factors: building size, density, building height, floor size, capacity, and available amenities. Although many first year students live in older facilities and high rise dorms, the housing trends that reflect newer construction were given priority for the purposes of future development at UNM.

Building Size

Building sizes were summarized according to height, density per building, and density per floor. Sizes were averaged and resulted in the following:

- Height - 3 or 4 Stories
- Building Density - 250-300 students
- Floor Density - 65-100 students



Room Sizes/Spatial Arrangement

Room sizes vary according to configuration, but average 100-150 square feet per person.

The various spatial arrangements are as follows:

- Two 11' x 19' double room suites (4 people or "quad") with connected/shared kitchen and bath
- Two 16.5' x 12' double rooms (quad) with connected/shared bath
- Double 10' x 17' with shared bath
- Super Single 20' x 10' with private bath
- Super double 20' x 19' with private bath
- Quad suite with 2 baths, single deluxe bedrooms 7' x 9' and living room: 18' x 9'

All spatial configurations assume coed buildings with single sex floors/wings.

Community Types

- Co Ed, single gender floors/wings are common at most peer institutions.
- First year students are often paired in rooms or quads.

Living Learning Communities

Organized communities with a cultural and/or academic focus provide opportunities for residents to engage in common interests and academic pursuits. Spaces may have amenities that feature a range of activities for the particular community. Different types and target sizes of communities are:

- Honors, Leadership - 250 residents
- Fine Arts - 90 residents
- Health Sciences - 90 residents
- Business - 90 residents
- Multicultural/international Floor - 90 residents
- ROTC - 90 residents
- Engineering - 90 residents
- Female Science & Tech - 25 residents
- Sustainability - 90 students
- Healthy Living - 90 students
- Gay/Lesbian/Bisexual - 50 students

Student Management

Student management roles include Community Director, Residential Assistant (RA), Faculty Fellow, Academic Mentor, desk staff, Neighborhood Area Coordinator, and Student Senate.

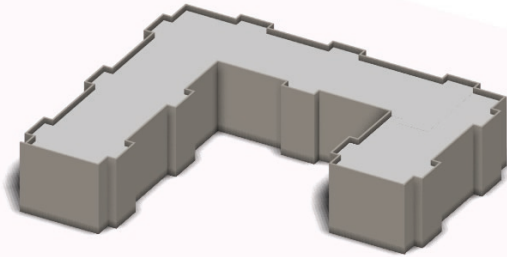
Amenities

Floor Amenities include study lounge, social lounge, 24 hour quiet floors, honors, living-learning floors, recycling bins, and filtered drinking water supply.

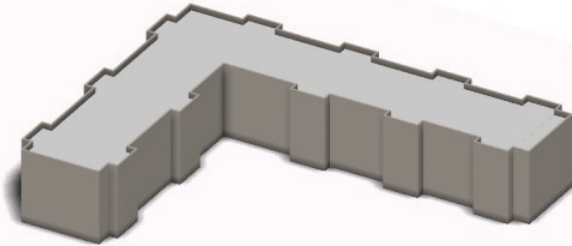
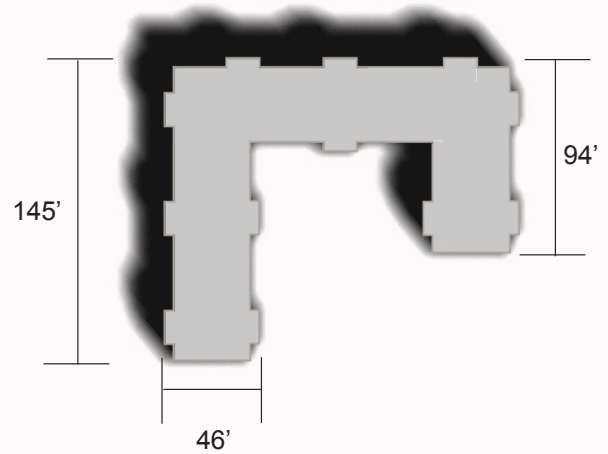
Building Amenities include social lounge, meeting rooms, study rooms, kitchen, computer lab, TV lounge, laundry facilities, air-conditioning, outdoor social spaces, picnic tables, BBQ, bike storage, handicap accessible facilities, ping pong and pool tables, and vending machines.

Area Amenities include dining, mail room, fitness center, cafe, market, outdoor recreation, BBQ, picnic tables, transportation hub, access to campus & public transportation.

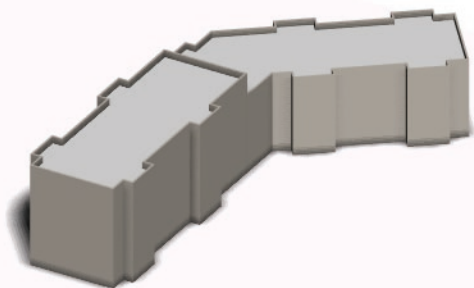
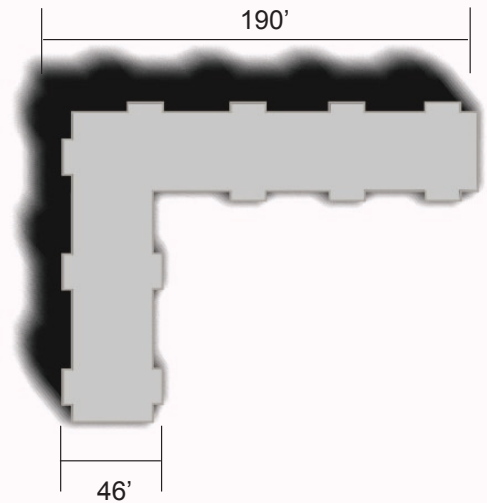
Module Types & Sizes Approximated
(20' x 28' quad w/bath & 18' x 20' double w/bath)



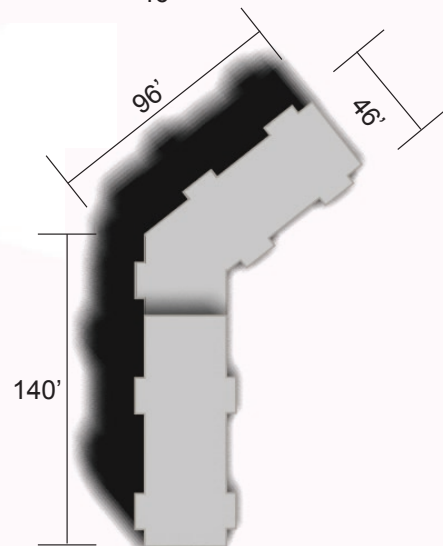
3-4 stories (approx 30'-40')
Quad & Double Occupancy Units w/ shared bath
72 Residents per floor
216 Residents per building



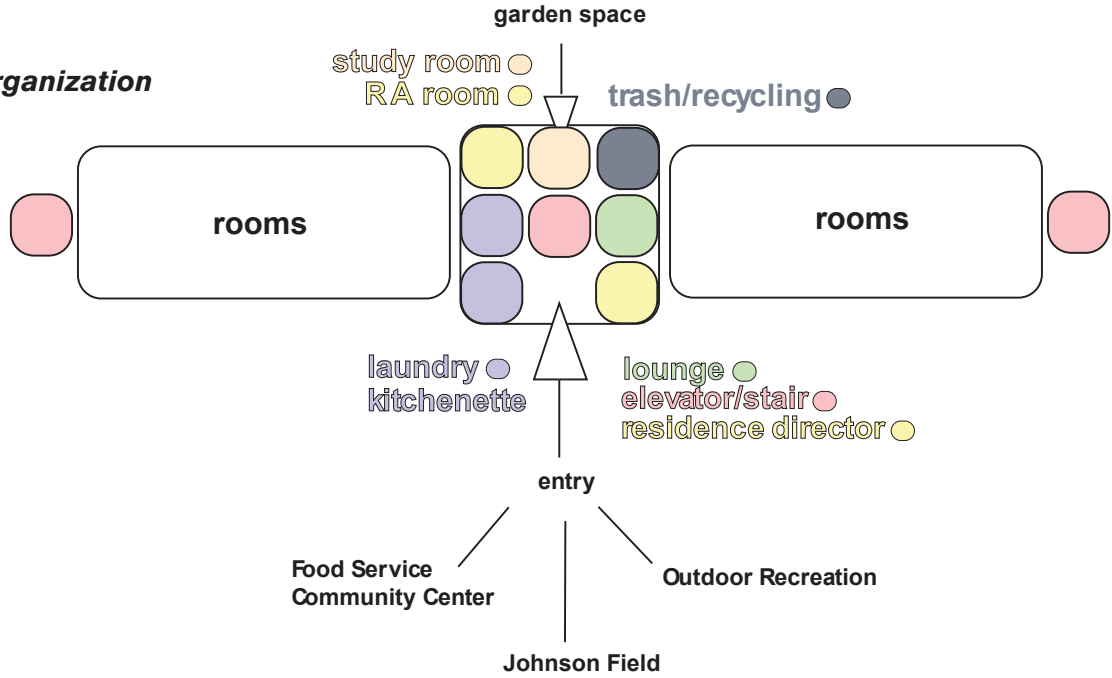
3-4 stories (approx 30-40')
Quad & Double Occupancy Units w/ shared bath
76 Residents per floor
228-304 Residents per building



3-4 stories (approx 30-40')
Quad & Double Occupancy Units w/ shared bath
Approx. 52 Residents per floor
156-208 Residents per building

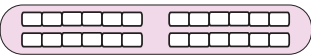


Residence Hall Organization




Community Organization

Home
 common double with shared Bath, furnished, accessible

Block

 50-65 Residents
 2 Residence Assistants
 Meeting Space
 elevator and stairs

Neighborhood

 3-4 Floors
 200-350 Residents per Building
 Resident Director
 Social Lounge
 Recreation Space
 Study Room
 Kitchenette
 Laundry

Village

 500-1000 Residents
 Community Center
 Dining
 Recreation
 Advising