

933 BRADBURY RENOVATIONS / AIMS EXPANSION

Project Status

June 5, 2019

SCOPE

The AIMS Charter School expansion is intended to consolidate their educational spaces in the 933 Bradbury facility, where their main campus is currently located. The expansion is designed to comply with PSFA standards for Charter schools. Several concepts were drivers for design decisions in order to provide a durable and cost effective expansion, including:

- Segregated facilities that eliminate student contact with other building occupants (except for emergency exiting).
- Areas for the expansions were planned to minimize, as much as possible, the demolition and impact on the existing building.

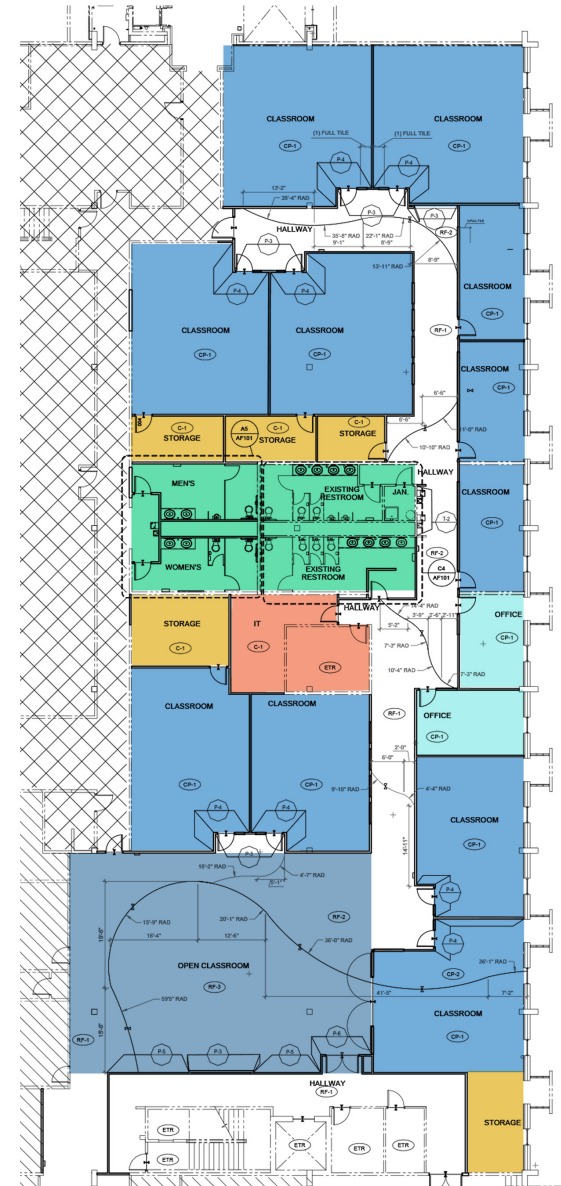
PROGRAM

Total Renovation Area: 13,840 SF

- Educational Space: 8,683 SF
- Including 11 Classrooms and 1 Open Classroom
- Office Space: 470 SF
- Storage Space: 853 SF
- IT Closet: 236 SF
- Restrooms: 1400 SF

STATUS

- Public School Facilities Authority (PSFA) has reviewed and approved the construction documents.
- Construction Industries Division (CID) has issued the construction permit.
- General Contractor is on standby to start construction. LDC is prepared to finalize the contract with GC.
- Space is estimated to be turned over to LDC in July.
- Approximate construction start date is August 5.
- Estimated completion date December 13.
- Project Budget: \$1,250,000
- Cost Estimate: \$1,240,803



LEGEND

- EDUCATIONAL
- OFFICE
- IT
- STORAGE
- RESTROOMS